

ShoreJax

Concrete Armor Units

ShoreJax are a flexible interlocking concrete armor unit available in a variety of sizes. ShoreJax are used to resist the erosive forces generated due to high velocity water.

Applications include energy dissipation at the bottom of high velocity channels and spillways, stream bank stabilization due long term degradational erosion, bridge pier scour prevention and velocity reduction at pipe outfalls.

The SJ-24 is capable of withstanding water velocities of up to 24 ft/sec. ShoreJax can be placed in a random configuration, such as in lining an underwater scour hole, or in a uniform pattern for improved system performance in wave attack or energy dissipation applications. SJ-24 units are manufactured by the dry cast process, SJ-48 can be manufactured either dry cast or wet cast with larger units being wet cast. Reinforcing steel can be designed for each application and included in the wet cast units.

Applications

- Energy Dissipation
- Streambank Protection
- Bridge Pier Scour
- Toe Stabilization
- Drop Structures
- Wiers
- Outfalls

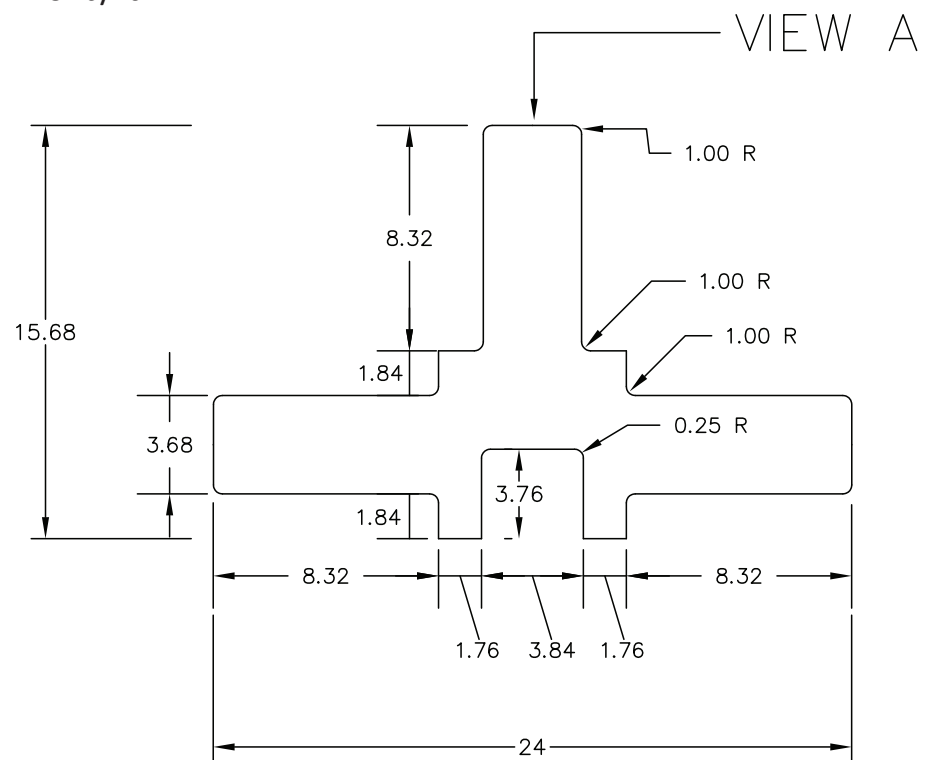
ShoreJax 24" (SJ-24) Dimension Details

TECHNICAL

UNIT	LENGTH (in)	VOLUME (ft ³)	WEIGHT (lbs)	*LINEAR COVERAGE (IN)
SJ-24	24	0.56	78	12
SJ-48	48	4.49	630	24
SJ-72	72	15.14	2120	36

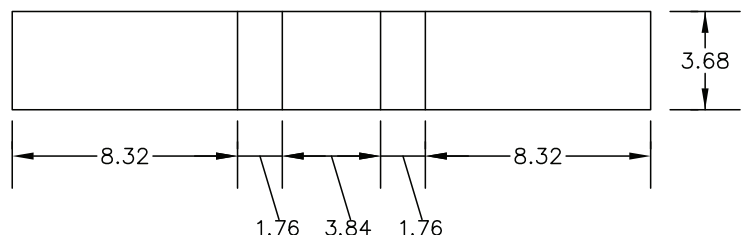


*Assumed concrete density 140 lb/ft³



ALL DIMENSIONS IN INCHES

VIEW A



For technical design assistance with ShoreJax or Shoreblock articulating concrete blocks contact SHORETEC. We can provide in-person assistance at your office or a technical training program eligible for PDH credits.

ShoreJax